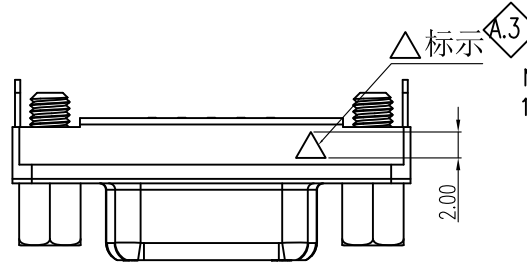
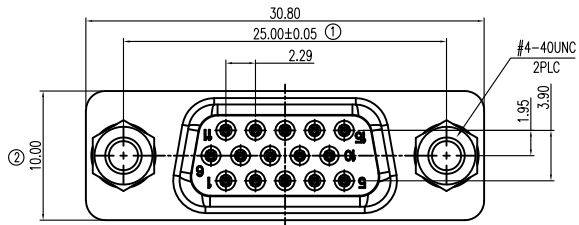


HF+RoHS



NOTE:

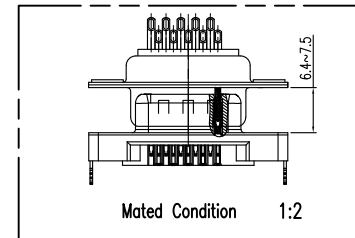
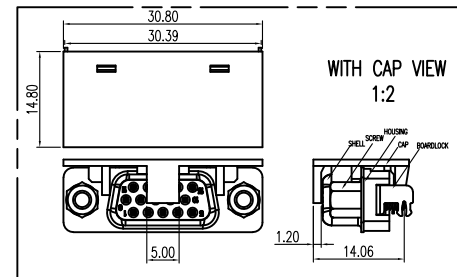
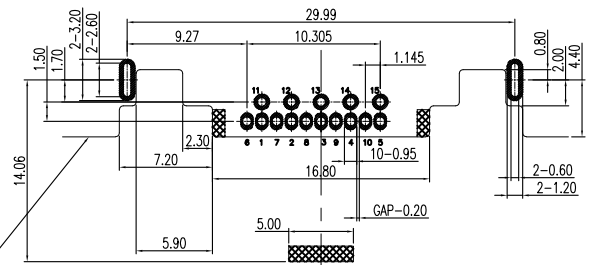
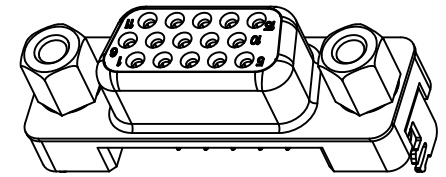
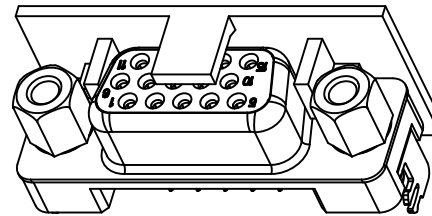
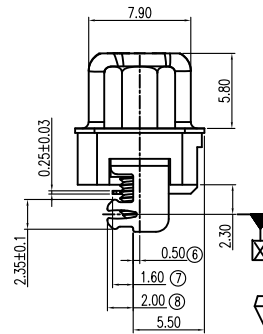
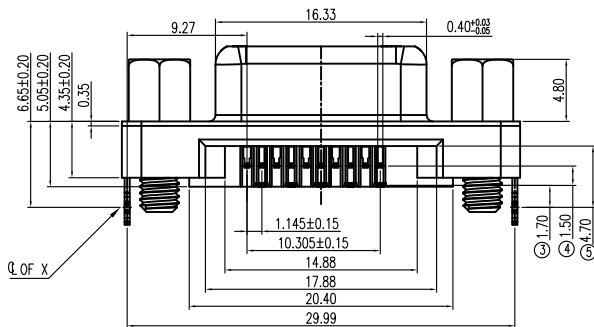
1. MATERIALS

HOUSING : LCP , UL 94V-0, BLACK.
 CAP : LCP, UL 94V-0, BLACK.
 SHELL (外壳) : SPCC, T=0.35mm.
 TERMINAL (端子) C2680, T=0.25±0.03mm.
 BOARDLOCK (鱼叉) : SUS304, T=0.40mm
 SCREW (螺丝) : C3604

2. PLATING

TERMINAL: GOLD FLASH PLATED ON CONTACT AREA.
 NICKL 50u" MIN UNDERPLATING OVER ALL.
 MATTE TIN 100u" MIN PLATED ON SODERING TAIL.

BOARDLOCKS: 100u" MIN. TIN PLATED.
 SHELL: NI 50u" MIN PLATED.
 SCREW: NI 50u" MIN PLATED
 RIVET: NI 40u" MIN PLATED
 3. MECHANICAL CHARACTERISTICS
 INSTERTION FORCE: 0.3 TO 3.5 Kgf Max.



RECOMMENDED P.C.B LAYOUT (COMPONENT SIDE)
 P.C.B THICKNESS=1.20mm (TOLERANCE=±0.05)

REV.	ECN. NO.	DRAWN	DATE	EC.content
A.3	EN2309003	Candy	09/05/2023	增加△标记, 便于客户端识别我司产品



⊗: QUALITY CONTROL ITEM	GENERAL TOLERANCE .X± 0.38 X'± 2' .XX± 0.25 X'± 1' .XXX± 0.13	PART NO.: WD-3017-40
APPROVED		TITLE: SLIM-H15母反向破板CH0.5mm,半金穿锡G/F,LCP黑胶无卤, DIP1.60mm,锁4.8*11.8铜螺丝,透明载带卷装,无D/C
CHECKED		UNIT: mm
DRAWN		SCALE: 1:1 SHEET: 1/1 REV.: A.3

SIZE: A4